

FOR SALE
READY FOR TRANSPORT

PRICE DROP
\$310,000.00



CLEVER LIVING ANGUS 6 DEG

Built around the bedlam of family life, you'll love the central open plan living area, with an easy indoor-outdoor flow & raking ceiling throughout



Open-plan kitchen and dining area . 2 double bedrooms and a large master bedroom with ensuite and walk-in wardrobe . 2 bathrooms (including ensuite) . separate laundry . MBIE Multiproof approval . Blanco Appliances . Electric Oven . Electric Hobs . Hot Water Cylinder

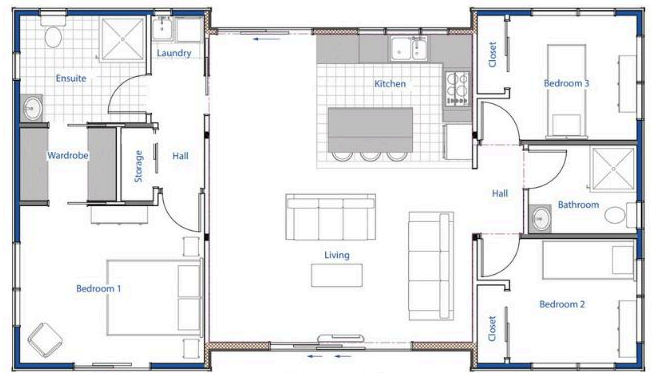
\$318,375.21

Includes transportation within a 50K radius is subject to site inspection. Standard ground is allowed for regarding setting out the piles – site inspection is required to confirm this cost.

Supplied by
BUNNINGS TRADE

CLEVER LIVING CO.

Shane Stone Builders Ltd are an approved builders for Clever Living Co Homes by Bunnings



13.35m x 7.60m

TOTAL
96.96 SQM

LIVING 21.08 SQM
 KITCHEN 9.43 SQM
 BATHROOM 4.34 SQM
 BEDROOM 2 AND 3 BOTH 8.14 SQM
 MASTER SUITE + ENSUITE + WARDROBE 21.75 SQM



Modern sleek exterior colours, with warm depth and a modern kitchen yet to be installed. This home is perfect for years to come.



SHANE STONE BUILDERS LTD